



Using the Cordless Jigsaw

1. Protective equipment must be worn, including ear defenders and goggles.
2. The saw must always be held properly when working. Hands must be kept clear of the blade.
3. Stop using the jigsaw if the fingers start to tingle from vibration, hands and fingers must be kept warm to encourage blood circulation. Find out about vibration.
4. To prevent damage to the blade, check that there are no nails, screws or metal embedded in the workpiece.
5. The blade must have stopped completely before withdrawing it from the workpiece.
6. The machine must be stopped and the battery removed before making any adjustments.
7. Switch off; remove the battery and store the jigsaw in a safe place before leaving unattended.
8. If the jigsaw is not being used for a while, after removing the battery, it is safer to remove the blade as well.
9. If the equipment does not work properly do not attempt to repair it. Contact the hire company.

Please keep this leaflet safely as it may be required for future reference



Hae
HIRE ASSOCIATION EUROPE

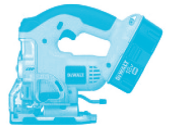
Hire Association Europe
2450 Regents Court
The Crescent
Birmingham Business Park
Soliuhull B37 7YE

Telephone: 44 (0) 121 380 4600
Fax: 44 (0) 121 333 4109
Email: mail@hae.org.uk
website: www.hae.org.uk

The rules and procedures in force where people are at work may require the person responsible for this equipment to carry out a specific risk assessment.

It is important to read this entire leaflet BEFORE using the Cordless Jigsaw

1. Electricity, even low voltage, can be hazardous and must always be used with care.
2. The rechargeable batteries in cordless tools may contain toxic chemicals. Care must be taken.
3. Machines that vibrate enough to make the fingers tingle can be hazardous if used for a long time. Find out about vibration.
4. This cordless jigsaw is designed to cut wood, metal, laminates and plastic using the appropriate blade. Do not use it to cut anything containing asbestos.
5. The action of this jigsaw can cause injury or damage if the machine is not used in a careful and controlled way.
6. If the operator has not used the jigsaw before they should practice on some scrap material before starting on the main task.
7. The work should be planned and thought out to ensure it will always be carried out safely.
8. The following items of personal protective clothing must be worn;
Goggles – impact resistant EN166 – B or BS2092 grade 1;
Dust mask – a minimum of EN149:2001 FFP3 protection;
Ear muffs or plugs giving protection for levels up to 95dB(A):
Gloves
Rcd – using a 230v (mains) supply to charge batteries.
9. This machine must not be used by minors, or by anyone under the influence of drugs or alcohol.
10. This cordless jigsaw is designed for operation by an able-bodied adult. Anyone with a temporary or permanent disability must seek expert advice before using it.



Every effort has been made by HAE/EHA to ensure that the information given in this document and supporting material is accurate and not misleading. HAE/EHA cannot accept responsibility for any loss or liability perceived to have arisen from the use of any such document/material. Only Acts of Parliament and Statutory Instruments have the force of law and only the courts can authoritatively interpret the law.

Any unauthorised reproduction – manually or electronically – is STRICTLY prohibited

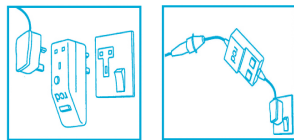
©Copyright Hire Association Europe April 2011

Telephone: 44 (0) 121 380 4600
Fax: 44 (0) 121 333 4109
Email: mail@hae.org.uk
website: www.hae.org.uk

Hire Association Europe
2450 Regents Court
The Crescent
Birmingham Business Park
Soliuhull B37 7YE

Hae
HIRE ASSOCIATION EUROPE

1. Do not try to use a battery-powered tool while it is being recharged. This may overload the electrical circuits and the batteries may explode.
2. Toxic and flammable fumes are produced when charging some types of batteries.
3. Charging should be carried out in a dry, cool, well-ventilated and safe location away from other people.
4. Do not attempt to recharge ordinary batteries. They will explode!



1. Use only the correct batteries for the equipment as supplied by the hire company.
2. Use only the correct charger as supplied by the hire company and follow any instructions given.
3. Plug the residual current device (rcd) into the 230v socket when charging batteries. Plug the charger into the rcd.

BATTERIES



8. Do not throw away old or damaged batteries – return them to the hire company.

1. The following items of personal protective equipment (ppe) are the minimum that must be worn whenever this machine is used. Particular jobs or environments may require higher levels of protection.
Impact resistant goggles must be worn (EN166 – B or BS2092 grade 1) when this machine is being used.
This equipment is likely to cause noise levels up to 95 dB (A) – appropriate ear muffs or plugs must be worn, giving protection for this level as a minimum.
Continuous use of this machine may cause the hands to tingle from vibration. Find out about the possible hazards of vibration.
No loose, flapping clothing should be worn when operating this machine as it could get caught in the saw.
Anyone working nearby will need to wear appropriate personal protective equipment.
2. Check on how the on/off switch operates – before switching the cordless jigsaw on, it must be known how to stop it.
3. This cordless jigsaw should not be used in the rain or where it might get wet.
4. Ensure the blade is fitted correctly.
5. Most materials, except wood, will cut better if an approved cutting lubricant is used.
6. Ensure the correct type of blade is used, recommended by the hire company for the material being cut.
7. Switch the cordless jigsaw off, and if (perhaps on the battery box), switch it off or temporarily remove the battery, before changing the blade.
8. Check the machine, saw blades, batteries and charging unit. If anything is found damaged do not use the cordless jigsaw – contact the hire company.
9. Ensure that the saw is held properly, using two hands.
10. The following items of personal protective equipment (ppe) are the minimum that must be worn whenever this machine is used. Particular jobs or environments may require higher levels of protection.
Impact resistant goggles must be worn (EN166 – B or BS2092 grade 1) when this machine is being used.
This equipment is likely to cause noise levels up to 95 dB (A) – appropriate ear muffs or plugs must be worn, giving protection for this level as a minimum.
Continuous use of this machine may cause the hands to tingle from vibration. Find out about the possible hazards of vibration.
No loose, flapping clothing should be worn when operating this machine as it could get caught in the saw.
Anyone working nearby will need to wear appropriate personal protective equipment.

CORDLESS JIGSAW



Before Starting Work...